

# iWash S 112 | 48W

## Product Reference

Environment Indoor

Installation Ceiling Surface

## Construction & Materials

Housing Extruded Aluminium

Primary Lens PMMA

Primary Reflector PC metallised

Secondary Reflector Black Raster – PC, White Raster – PC

Body Finish White, Black, Custom

Diffuser -

Antiglare Baffle -

## Thermal Management

Heat Sink Material Extruded Aluminium

Cooling Technique Passive Cooling

## Optical System

Beam Direction Fixed Asymmetric

Tilt No

Swivel No

## Electrical System

Driven with Constant Current Driver

Input Voltage/Hz 220V- 240V/50-60Hz

Control Gear Included

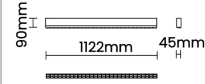
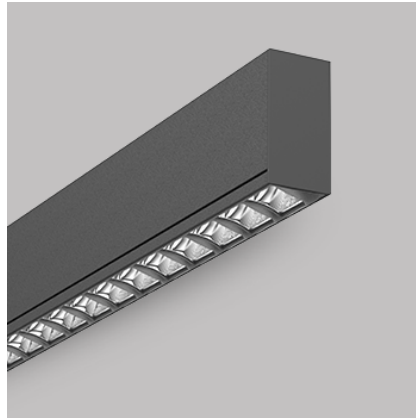
Mounting Integral

LED Power Watts 41.3W

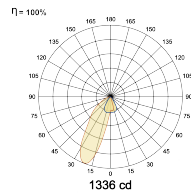
System Power Watts 47.5W

Operating Voltage Vin 220-240 Vac

Power Factor p.f. > 0.95



## Light Distribution



## LED Technology

Binning 3 Step MacAdam

LED Life Time @ L70/B10 >50000 hours

Colour Rendering (CRI) CRI80, CRI90

Led Type SMD

LED Fitted Samsung Mid power LED array 39-42Vdc/1050mA

## Controls

Standard Switchable On/Off

Optional DDIM, CASAMBI, Non Dimmable

## Ordering Details

Code Example:	Name	Watt	CCT	CRI	Angle	Finish	Control
	<b>iWash S 112</b>	<b>48W</b>	<b>WW27K</b>	<b>CRI80</b>		<b>SWH</b>	<b>On/Off</b>

Select one from each column with highlighted values to create the ordering code

NAME	WATT	LUMEN	EFFICACY	CCT	CRI	ANGLE	FINISH	CONTROL		
<b>iWash S 112</b>	<b>48W</b>	4038	85	2700K	<b>WW27K</b>	<b>CRI80</b>	White	<b>SWH</b>	Non Dimmable <b>On/Off</b>	
		4180	88	3000K	<b>WW30K</b>		CRI90	Black	<b>SBL</b>	Dali Dimmable <b>DDIM</b>
		4418	93	4000K	<b>NW40K</b>			Custom	<b>CSM</b>	Casambi <b>CBTM</b>
		4513	95	5700K	<b>CW57K</b>					
				2700K-5700K	<b>TW</b>					
<b>iWash S 112</b>	<b>48W</b>			<b>WW27K</b>	<b>CRI80</b>		<b>SWH</b>	<b>on/off</b>		