

Spotboy Pro SF 75 | 28W

Product Reference

Environment Indoor

Installation Ceiling Surface

Construction & Materials

Housing Die Cast Aluminium, Milled Aluminium

Primary Lens PMMA

Primary Reflector -

Secondary Reflector -

Body Finish White, Black, Custom

Diffuser -

Antiglare Baffle -

Thermal Management

Heat Sink Material Die cast Aluminium

Cooling Technique Passive Cooling

Optical System

Beam Direction Adjustable

Tilt Yes

Swivel Yes

Electrical System

Driven with Constant Current Driver

Input Voltage/Hz 220V- 240V/50-60Hz

Control Gear Included

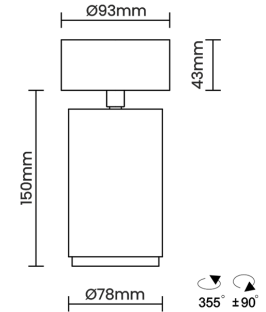
Mounting Integral

LED Power Watts 23.7W

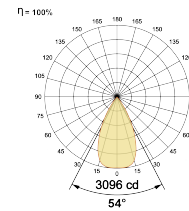
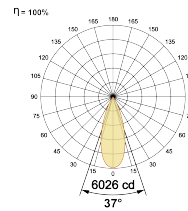
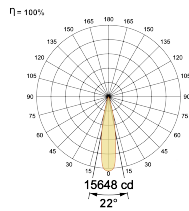
System Power Watts 27.2W

Operating Voltage V_{in} 220-240 Vac

Power Factor p.f. > 0.95



Light Distribution



LED Technology

Binning 3 Step MacAdam

LED Life Time @ L80/B10 >50000 hours

Colour Rendering (CRI) CRI80, CRI90

Led Type COB

LED Fitted Cree COB LED 33V-36Vdc/700mA

Controls

Standard Switchable On/Off

Optional DDIM, Non Dimmable

Ordering Details

| Code Example: | Name | Watt | CCT | CRI | Angle | Finish | Control |
|---------------|--------------------------|------------|--------------|--------------|----------------|------------|---------------|
| | Spotboy Pro SF 75 | 28W | WW27K | CRI80 | 22°(SS) | SWH | On/Off |

Select one from each column with highlighted values to create the ordering code

| NAME | WATT | LUMEN | EFFICACY | CCT | CRI | ANGLE | FINISH | CONTROL |
|--------------------------|------------|-------|----------|--------------|--------------|----------------|------------|---|
| Spotboy Pro SF 75 | 28W | 2475 | 91 | 2700K | WW27K | CRI80 | 22°(SS) | White SWH Non Dimmable On/Off |
| | | 2557 | 94 | 3000K | WW30K | CRI90 | 37°(MD) | Black SBL Dali Dimmable DDIM |
| | | 2693 | 99 | 4000K | NW40K | | 54°(WD) | Custom CSM |
| | | 2747 | 101 | 5700K | CW57K | | | |
| Spotboy Pro SF 75 | 28W | | | WW27K | CRI80 | 22°(SS) | SWH | On/Off |

