

# Peeping Tom | 5W

## Product Reference

Environment Indoor

Installation Ceiling Recess

## Construction & Materials

Housing Die Cast Aluminium, Milled Aluminium

Primary Lens PMMA

Primary Reflector PC metallised

Secondary Reflector -

Body Finish White, Black, Custom

Diffuser -

Antiglare Baffle -

## Thermal Management

Heat Sink Material Die cast Aluminium

Cooling Technique Passive Cooling

## Optical System

Beam Direction Adjustable

Tilt Yes

Swivel Yes

## Electrical System

Driven with Constant Current Driver

Input Voltage/Hz 220V- 240V/50-60Hz

Control Gear Included

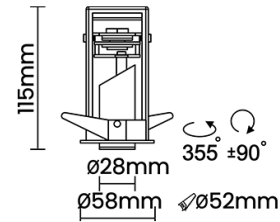
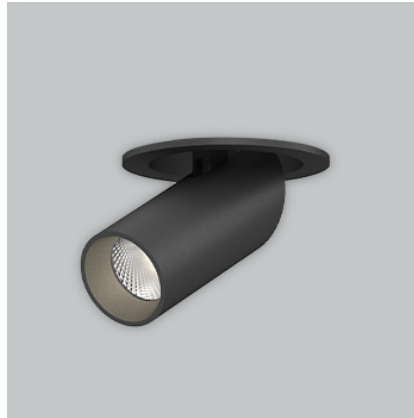
Mounting Remote

LED Power Watts 3.7W

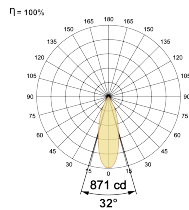
System Power Watts 4.2W

Operating Voltage Vin 220-240 Vac

Power Factor p.f. > 0.5



## Light Distribution



## LED Technology

Binning 3 Step MacAdam

LED Life Time @ L70/B10 >50000 hours

Colour Rendering (CRI) CRI80, CRI90

Led Type COB

LED Fitted CREE COB LED 9Vdc/350mA

## Controls

Standard Switchable On/Off

Optional PDIM, DDIM, CASAMBI, Non Dimmable

## Ordering Details

Code Example:	Name	Watt	CCT	CRI	Angle	Finish	Control
	<b>Peeping Tom</b>	<b>5W</b>	<b>WW27K</b>	<b>CRI80</b>	<b>32°(MD)</b>	<b>SWH</b>	<b>On/Off</b>

Select one from each column with highlighted values to create the ordering code

NAME	WATT	LUMEN	EFFICACY	CCT		CRI	ANGLE	FINISH		CONTROL	
<b>Peeping Tom</b>	<b>5W</b>	361	86	2700K	<b>WW27K</b>	<b>CRI80</b>	32°(MD)	White	<b>SWH</b>	Non Dimmable	<b>On/Off</b>
		382	91	3000K	<b>WW30K</b>	CRI90		Black	<b>SBL</b>	Phase Dimmable	<b>PDIM</b>
		403	96	4000K	<b>NW40K</b>			Custom	<b>CSM</b>	Dali Dimmable	<b>DDIM</b>
		416	99	5700K	<b>CW57K</b>					Casambi	<b>CBTM</b>
<b>Peeping Tom</b>	<b>5W</b>			<b>WW27K</b>	<b>CRI80</b>	<b>32°(MD)</b>	<b>SWH</b>	<b>On/Off</b>			