

# Hoopla Dark 150 | 90W

## Product Reference

Environment Indoor

Installation Ceiling Suspended

## Construction & Materials

Housing Extruded Aluminium

Primary Lens -

Primary Reflector PC metallised

Secondary Reflector Black Raster - PC

Body Finish White,Black,Custom

Diffuser PMMA Frosted

Antiglare Baffle -

## Thermal Management

Heat Sink Material Aluminium

Cooling Technique Passive Cooling

## Optical System

Beam Direction Fixed

Tilt No

Swivel No

## Electrical System

Driven with Constant Current Driver

Input Voltage/Hz 220V- 240V/50-60Hz

Control Gear Included

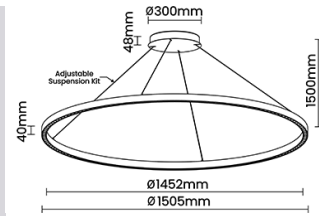
Mounting Integral

LED Power Watts 77.6W

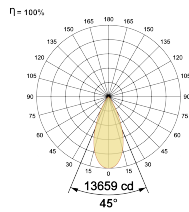
System Power Watts 89.2W

Operating Voltage Vin 220-240 Vac

Power Factor p.f. > 0.95



## Light Distribution



## LED Technology

Binning 3 Step MacAdam

LED Life Time @ L70/B10 >50000 hours

Colour Rendering (CRI) CRI80,CRI90

Led Type SMD high power

LED Fitted Cree 3030 LED 33V-36Vdc/2250mA

## Controls

Standard Switchable On/Off

Optional PDIM,DDIM,BTTM,CASAMBI,Non Dimmable

## Ordering Details

Code Example:	Name	Watt	CCT	CRI	Angle	Finish	Control
	<b>Hoopla Dark 150</b>	<b>90W</b>	<b>WW27K</b>	<b>CRI80</b>	<b>45°</b>	<b>SWH</b>	<b>On/Off</b>

Select one from each column with highlighted values to create the ordering code

NAME	WATT	LUMEN	EFFICACY	CCT	CRI	ANGLE	FINISH	CONTROL	
<b>Hoopla Dark 150</b>	<b>90W</b>	7671	86	2700K	<b>WW27K</b>	45°	White	Non Dimmable	<b>On/Off</b>
		7939	89	3000K	<b>WW30K</b>		Black	Phase Dimmable	<b>PDIM</b>
		8296	93	4000K	<b>NW40K</b>		Custom	Dali Dimmable	<b>DDIM</b>
		8474	95	5700K	<b>CW57K</b>		Bluetooth Dimmable	<b>BTTM</b>	
							Casambi	<b>CBTM</b>	
<b>Hoopla Dark 150</b>	<b>90W</b>			<b>WW27K</b>	<b>CRI80</b>	<b>45°</b>	<b>SWH</b>	<b>On/Off</b>	