

iWash P 112 | 48W

Product Reference

Environment Indoor

Installation Ceiling Suspended

Construction & Materials

Housing Extruded Aluminium

Primary Lens PMMA

Primary Reflector PC metallised

Secondary Reflector Black Raster – PC, White Raster – PC

Body Finish White, Black, Custom

Diffuser -

Antiglare Baffle -

Thermal Management

Heat Sink Material Die cast Aluminium

Cooling Technique Passive Cooling

Optical System

Beam Direction Fixed Asymmetric

Tilt No

Swivel No

Electrical System

Driven with Constant Current Driver

Input Voltage/Hz 220V- 240V/50-60Hz

Control Gear Included

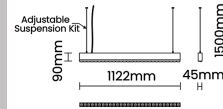
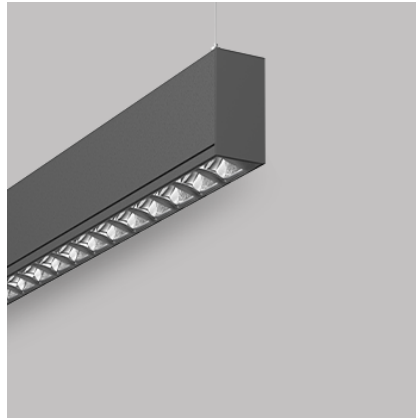
Mounting Integral

LED Power Watts 41.3W

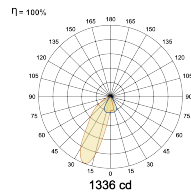
System Power Watts 47.5W

Operating Voltage Vin 220-240 Vac

Power Factor p.f. > 0.95



Light Distribution



LED Technology

Binning 3 Step MacAdam

LED Life Time @ L70/B10 >50000 hours

Colour Rendering (CRI) CRI80, CRI90

Led Type SMD

LED Fitted Samsung Mid power LED array 39-42Vdc/1050mA

Controls

Standard Switchable On/Off

Optional DDIM, CASAMBI, Non Dimmable

Ordering Details

| Code Example: | Name | Watt | CCT | CRI | Angle | Finish | Control |
|---------------|--------------------|------------|--------------|--------------|-------|------------|---------------|
| | iWash P 112 | 48W | WW27K | CRI80 | | SWH | On/Off |

Select one from each column with highlighted values to create the ordering code

| NAME | WATT | LUMEN | EFFICACY | CCT | CRI | ANGLE | FINISH | CONTROL | |
|--------------------|------------|-------|----------|--------------|--------------|--------------|------------|---------------|---------------|
| iWash P 112 | 48W | 4038 | 85 | 2700K | WW27K | CRI80 | White | Non Dimmable | On/Off |
| | | 4180 | 88 | 3000K | WW30K | CRI90 | Black | Dali Dimmable | DDIM |
| | | 4418 | 93 | 4000K | NW40K | | Custom | Casambi | CBTM |
| | | 4513 | 95 | 5700K | CW57K | | | | |
| | | | | 2700K-5700K | TW | | | | |
| iWash P 112 | 48W | | | WW27K | CRI80 | | SWH | on/Off | |