

# iPro S 168 | 36W

## Product Reference

Environment Indoor

Installation Ceiling Surface

## Construction & Materials

Housing Extruded Aluminium

Primary Lens PMMA

Primary Reflector -

Secondary Reflector Black Raster - PC, White Raster - PC

Body Finish White, Black, Custom

Diffuser -

Antiglare Baffle -

## Thermal Management

Heat Sink Material Extruded Aluminium

Cooling Technique Passive Cooling

## Optical System

Beam Direction Fixed

Tilt No

Swivel No

## Electrical System

Driven with Constant Current Driver

Input Voltage/Hz 220V- 240V/50-60Hz

Control Gear Included

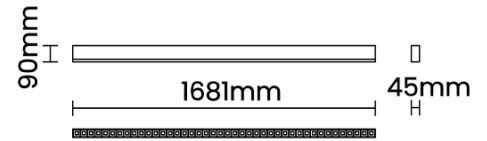
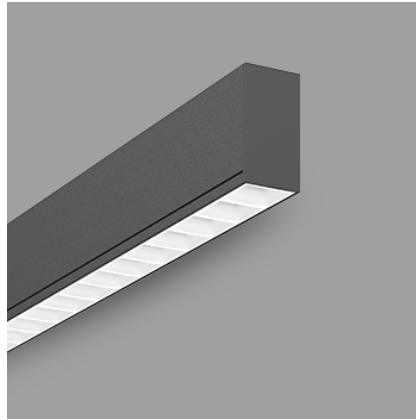
Mounting Integral

LED Power Watts 30.5W

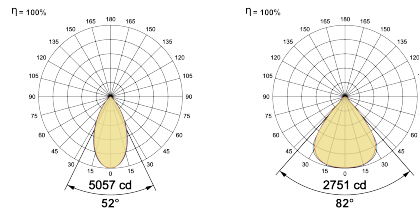
System Power Watts 35.1W

Operating Voltage Vin 220-240 Vac

Power Factor p.f. > 0.95



## Light Distribution



## LED Technology

Binning 3 Step MacAdam

LED Life Time @ L80/B10 >50000 hours

Colour Rendering (CRI) CRI80, CRI90

Led Type SMD

LED Fitted Osram/Samsung Mid power LED array 39-42Vdc/750mA

## Controls

Standard Switchable On/Off

Optional DDIM, CASAMBI, Non Dimmable

## Ordering Details

Code Example:	Name	Watt	CCT	CRI	Angle	Finish	Control
	<b>iPro S 168</b>	<b>36W</b>	<b>WW27K</b>	<b>CRI80</b>	<b>52°(WD)</b>	<b>SWH</b>	<b>On/Off</b>

Select one from each column with highlighted values to create the ordering code

NAME	WATT	LUMEN	EFFICACY	CCT	CRI	ANGLE	FINISH	CONTROL
<b>iPro S 168</b>	<b>36W</b>	4072	116	2700K	<b>WW27K</b>	<b>CRI80</b>	52°(WD) 52°(WD)	Non Dimmable <b>On/Off</b>
		4212	120	3000K	<b>WW30K</b>	CRI90	82°(VWD)	Dali Dimmable <b>DDIM</b>
		4423	126	4000K	<b>NW40K</b>			Casambi <b>CBTM</b>
		4493	128	5700K	<b>CW57K</b>			
				2700K-5700K	<b>TW</b>			
<b>iPro S 168</b>	<b>36W</b>			<b>WW27K</b>	<b>CRI80</b>	<b>52°(WD)</b>	<b>SWH</b>	<b>On/Off</b>